

# ETABLISSEMENT PUBLIC LOCAL D'ENSEIGNEMENT AGRICOLE



Les Sillons de Haute Alsace – Rouffach – Wintzenheim is an establishment committed to the fundamental development of durability: rural innovation and respect of the economic, environmental, social and cultural balance.

We have a desire to work collectively in accordance with the missions of the agricultural education for the benefit of the students, professionals, and the territory.

The DNA of our team consist of transferring knowledge, open mindedness, sharing experiences and developing mobility. We are also open to experiment with new practices which are reflected in our various courses.

We welcome everybody to our different types of training on 2 exceptional sites, Rouffach and Wintzenheim, where you will find all the needed conditions in order to succeed such as 3 different exploitations focused in horticulture, viticulture and agriculture.

To answer to specific needs, our establishment develops innovative training and have installed centers in Mulhouse and Altkirch to ensure specific training to better respond to the demand of the workforce and to be able to participate in the local politics to implement actions on topics such as agro environmental issues and the food chain industry.

We invite you to come and visit our beautiful school. We will welcome you warmly and hope you will want to participate in our collective journey of moving forward for a better future.

Jean-Luc PROST

Director of Les Sillons de Haute Alsace



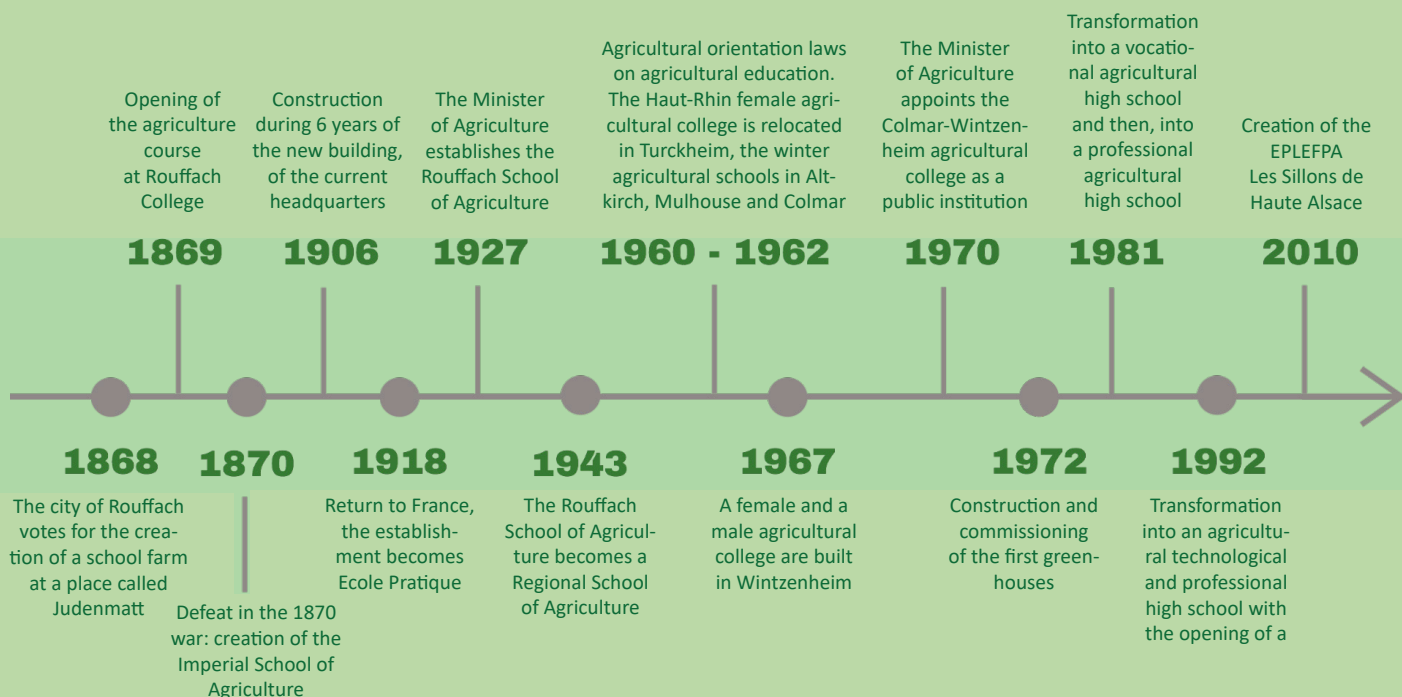
MINISTÈRE  
DE L'AGRICULTURE  
DE L'ALIMENTATION  
DE LA PÊCHE  
DE LA RURALITÉ  
ET DE L'AMÉNAGEMENT  
DU TERRITOIRE



# 1 ESTABLISHMENT FOR 2 SITES WITH STRONG IDENTITIES

The public local establishment of education and professional agricultural training (EPLEFPA = Etablissement Public local d'Enseignement et de Formation Professionnelle Agricole), Les Sillons de Haute Alsace, is an establishment from the Ministry of Food and Agriculture. It is situated on 2 different sites at a distance of 15 km from each other. One in Rouffach where the headquarters are located and one at Wintzenheim, at the entrance of the valley of Munster. Both are at the proximity of Colmar, one of the major cities of Alsace.

## A FEW HISTORICAL EVENTS OF OUR ESTABLISHMENT



## THE SITE OF ROUFFACH

After some vicissitudes, it is following a decision of the municipal council of Rouffach on October 11, 1868 that the creation of a farm-school in the place called Judenmatt, which was also made available to the school, was decided. This site was to serve as a practical school for the students attending the theoretical agricultural course that was annexed to the town's classical college. The agricultural school officially opened its doors in the fall of 1869. After the defeat of France in the war of 1870, the agricultural school of Rouffach became a state school and took the qualification of Imperial School of Agriculture. Because of its development, new buildings were decided by the town hall, the works of the current building started in the summer of 1906 and took 6 years to build the beautiful and stylish building. With the return to France in 1918, the establishment became a practical school. The decree of July 10, 1927 by the Minister of Agriculture made the Rouffach Agricultural School a regional agricultural school (decree of January 21, 1943).

Following the agricultural orientation laws of the 1960's, the Rouffach regional school of agriculture and viticulture became an agricultural and viticultural high school by order of April 12, 1963. For almost fifty years this school has trained generations of farmers and winegrowers who are still attached to this beautiful establishment.

## THE SITE OF WINTZENHEIM

At the end of World War II, it was necessary to meet the food needs of France. It is in this context that the agricultural orientation laws of August 2, 1960 and August 5, 1962 were promulgated. In the Haut Rhin (one of the two administrative departments of Alsace), the Collège agricole féminin du Haut-Rhin, located in Turckheim, and the winter agricultural schools of Altkirch, Mulhouse and Colmar had to be relocated in order to promote their development. Two establishments, a female agricultural college and a male agricultural college were built in 4 years in Wintzenheim from 1967 on a thirty hectare plot of land at the foot of the ruins of the Pflixbourg castle in Saint Gilles. The first greenhouses were put into service in 1972.

By decree of December 3, 1970, the Minister of Agriculture established the Colmar-Wintzenheim Agricultural College as a public institution. On February 10, 1972, a decree was published attaching the Colmar-Wintzenheim Female Agricultural College to the Colmar-Wintzenheim Agricultural College. At the beginning of the 1976-1977 school year, the two colleges were grouped together as a mixed agricultural college and then transformed into a vocational agricultural high school (LEPA) in 1981. On January 1, 1992, it became a LEGTA or Lycée d'Enseignement Général et Technologique Agricole. This change in status enabled it to access higher education by hosting sections of the Brevet de technicien supérieur en agriculture (BTSA).

In 2010, **Les SILLONS DE HAUTE ALSACE** was created following the merger of the historical establishments of Rouffach and Wintzenheim by prefectural decree in 2009. Like the history of Alsace, this establishment has a rich and complex past. Today, it is one of the five largest establishments of the Ministry of Agriculture and Food out of the 179 structures of this type existing on the metropolitan and island territory.

## COMPOSITION OF THE EPLFPA LES SILLONS DE HAUTE ALSACE

Since its creation in 2010, the EPLEFPA Les Sillons de Haute Alsace is composed of 7 centers:

- The agriculture and general technology high school in Rouffach (410 students)
- The agriculture and general technology high school in Wintzenheim (Lycée agricole du Pflixbourg 390 students)
- The apprentice training center of the Haut Rhin (CFA68 certified ISO 9001 and Qualiformagri, 450 apprentices)
- The professional training in agriculture center of Haut Rhin (CFPPA68 certified ISO 9001 et Qualiformagri, 800 adults/year with 75000 hours of internships)
- The winery Domaine de l'Ecole (15 ha of vines and produces, 60 000 bottles of Alsace wines)
- The agricultural farm of Judenmatt farm (50 ha of land and produces, 15 000 chickens/year)
- The gardens of Pflixbourg : horticultural farm (3 500 m<sup>2</sup> of greenhouses and 2.5 ha of horticulture with an onsite store)



## STRUCTURED CONSTITUENT CENTERS WHERE THE PROFESSION IS INVOLVED



## MISSIONS

The article 811-1 of the Code rural et de la pêche maritime français states EPLEFPA accomplishes the following 5 missions:

- 1 **Give general, technological and professional courses**
- 2 **Participates to the development of the local area and its animations**
- 3 **Contribute to the insertions of young people and adults to schooling and professional and social settings**
- 4 **Contribute to the development, experimental and innovative activities in the field of agriculture and the food industry**
- 5 **Participate in international cooperations with a focus on favoring exchanges of students, interns and teachers**

Thanks to the size, location, and specific courses of EPLEFPA Les sillons de Haute Alsace, we are capable of running many actions from the 5 given missions.

It is thanks to our many projects (Establishment, Education, Teaching durable production) that we are able to contribute the given missions.

Many commitments resulting from the choice of our team can be summarized by the following elements: solidarity to move forward, creativity to innovate, quality and know-how to transmit, education for equal rights and opportunities, digital education for access for all and protection of personal data, citizenship to build the future, mobility to build the Europe of tomorrow, agroecology to produce while respecting our ecosystems.

**These themes are developed in the following four areas of the school project:**

### **Axe 1**

**Renewed courses with students involved  
in their training,  
in close collaboration with our partners**

### **Axe 2**

**Attentive educational support  
in a living environment that promotes fulfilment**

### **Axe 3**

**A clarified organization and work in serenity  
for a synergy of quality  
within the working community**

### **Axe 4**

**An anchoring in our local area  
by a contribution to animation and development**

# ONE SCHOOL WITH MORE THAN 30 COURSES

## COURSES SPECIFIC TO AGRICULTURAL EDUCATION

Both sites of the EPLEFPA Les Sillons de Haute Alsace offer a complete educational system with a variety of courses ranging from Year 10 (15 years old) to vocational degree (21 years old, degree level 6), CAP (degree level 3), baccalaureate (vocational, technological or general from 16 to 18 years old, degree level 4) and the BTSa, (from 18 to 20 years old, degree level 5).

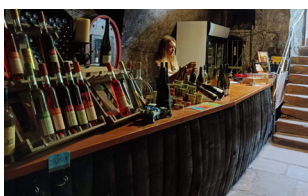
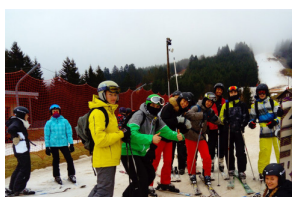
The diplomas offered by the EPLEFPA Les Sillons de Haute Alsace can be prepared by initial school training, apprenticeship, continuing education or distance learning for certain degrees or also thanks to APEL (Accreditation of prior experiential learning). The teachers implement individualized or personalized courses. The vocational, training and assessment curriculum are written according to capability approach or even skill units.

Concerning higher education, the slowly move towards semester schooling allows to multiply experiences and especially to offer international mobility while validating credit units or degree modules.

We offer 10 courses: General with scientific specialization, Technological with biology and agronomy, Vocational with agriculture, viticulture and oenology, horticulture and market gardening, landscaping, sales, nature management, laboratory and quality control, food science and processing.

A distribution by site, including the University Institute of Technology of Colmar for the vocational degree, is made on the following:

	site of Rouffach	site of Wintzenheim	University of technology of Colmar
	Year 10 agricultural training	Year 10 agricultural training	
LEVEL 3	Landscape gardener Viticulture Agriculture Landscaping Vegetable production	Horticulture	
LEVEL 4	General High school degree Technological High School Degree in agronomy and biology. Agriculture Viticulture and oenology Pet shop sales assistant	Landscaping Flower and vegetable production Nature management Laboratory and quality control Use and maintenance of agricultural machinery	
LEVEL 5	Viticulture and oenology Technical sales representative in wines, beers and spirits Technical sales assistant in agricultural supply	Landscaping Flower and vegetable production Food science	
LEVEL 6			Wine sales and marketing



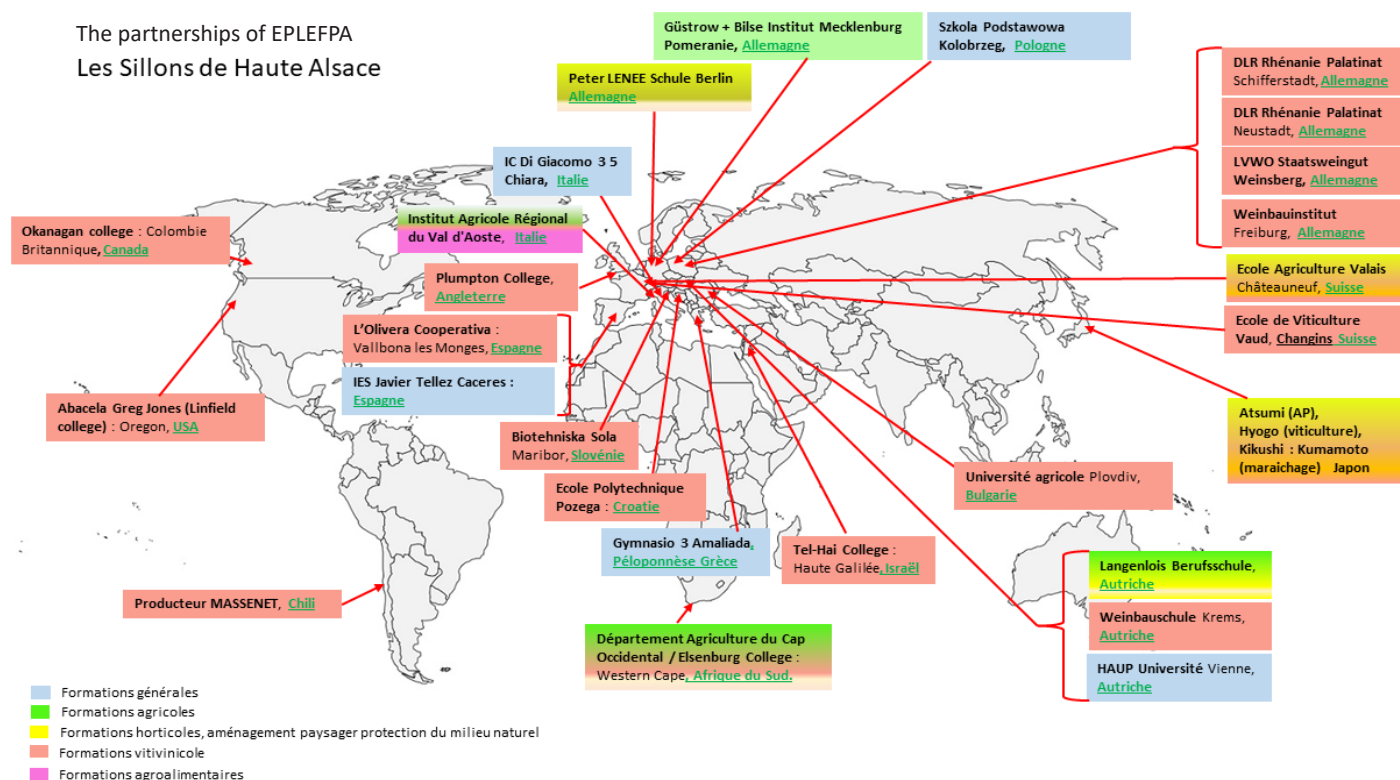
## NUMEROUS EDUCATIONAL ACTIVITIES

Students are at the heart of the professional activities we offer:

Wine fairs from the wine producing schools' club with our Technical Sales Representative HND students, jobdating, cross-border sales actions for promoting our farm's products, plant barter, form'action activities such as Theme Evenings, Ovinpiades or ovine knowledge and appraisal, cattle appraisal and participation in young wine taster contests at the Salon de l'Agriculture, pasture diagnosis, vocational contests in landscaping, plantations in villages, skiing in the Vosges mountains, river canoeing, making of cosmetics in relation with the EPLEFPA school of Saint Flour, activities of the Pflix'lab, Voisins des Vignes so that the people living next to the vineyards can meet the wine growers for a harmonious life or the development of territories in which our learners are stakeholders.



## A WIDE AND DIVERSE RANGE OF COURSES TO ACQUIRE KNOWLEDGE AND SKILLS:



In addition to training and educating students, les Sillons de Haute Alsace is also an incubator for innovation through several programs such as:

### 1 - THE ERASMUS+ PROGRAM

Les Sillons de Haute Alsace has arranged for teachers, technicians and students alike to benefit from international mobility thanks to partnerships or Memorandum of understanding with our foreign colleagues. Two teachers from Rouffach and Wintzenheim also have a national mission from the Bureau in charge of European Cooperation at the French Ministry of Agriculture to manage relationships with Ukraine and Germanic countries.

#### EVANET

European Vocational Agricultural Network : Réseau pour promouvoir la mobilité en milieu agricole et assurer la qualité des placements de stagiaires grâce à une banque de données avec la typologie des entreprises susceptible d'accueillir des stagiaires.

The **APPEL** program (2018-2020): Coordinated by les Sillons de Haute Alsace, aimed to exchange on innovative techniques to grow fruits and vegetables in a more sustainable agriculture. In doing so, multiple teachers and students spent time abroad to discover new ways of growing crops.

**EURO DUAL GRÜN**: A network to promote landscaping jobs in partnered countries.

## 2 - NATIONAL PROGRAMS

Les Sillons de Haute Alsace takes part as either a carrier or a partner in agro environmental programs in which the objectives are the reduction or removal of pesticides, reinforcing environmental friendly practices and developing methods to increase biodiversity. These programs are on a national level and are financed by the French department of agriculture (Ministère de l'Agriculture et de l'Alimentation).

### **SEFERSOL** (Focuses on innovative strategies for soil maintenance and fertility 2018-2023)

This program roots from the principal that in organic agriculture, the ability to control both the cover crop and the fertility of the soil is essential. These two factors highly influence the crop's economic performance. Les Sillons de Haute Alsace and seven other partners are involved in this program to develop 2 innovative strategies: manage the combination of cover crop and soil fertility, with very low use of pesticide. This strategy is compared with the conventional system in order to evaluate the global performance: maximizing the use of fertilizers and adapting soil conservation.

### **RESAB GRANDES CULTURES** to develop environmental friendly practices in agriculture

The main objective is to reduce and/or remove the use of pesticides. The 3 main approaches are: global analysis of the technical itinerary, dosing the products used, acquiring balance between cover density, crop association, crop protection interventions.

### **ECOPHYTO'TER** (2019- 2023) aims to reduce the use of pesticides

Students from 33 different schools are more and more involved in the innovative learning tools that are set up. This new way of learning allows future agriculturists to develop the necessary critical thinking skills to transition into agroecology.

**VIGLEEFRY** (2020-2022) consist of testing different alternatives to herbicides in the rows of vineyards, especially on difficult terrain, of different regions in France in order to be ready for the future ban on glyphosate.

### **NATIONAL PLAN FOR CAUSES ON VINEYARD WITHERING** (Plan National de Dépérissement du Vignoble PNDV)

For the past few years, professionals in the field of viticulture have noticed for multiple years a decline in the productivity of vines and/or premature death, either progressive or sudden. This effect is due to multiple reasons (climate, wood diseases, pests, etc.) in which 72 factors were identified. The department of education and research (Direction Générale de l'Enseignement et de la Recherche – DGER) created a specific program to fight against this decline in productivity in viticulture. Les Sillons de Haute Alsace was asked by the department of agriculture (ministère de l'Agriculture et de l'Alimentation) to appoint an employee to be in charge of spreading information about this national issue to agricultural public schools on a national level.

### **CREATING FLAVORS AND AWAKENING OUR SENSES**

This project was appointed to the site of Pflixbourg in Wintzenheim by the ministry of education and research (DGER) due to the school's specialization and its onsite laboratory.

It consists of boosting and animating the food industry by better developing the production and sales of local agriculture. In order to accomplish this mission, the fermentation workshop, Pico brasserie, was created and its rental to professionals was set up. The virtue of this project is to increase attraction toward the school's courses (level 4 and 5 degrees), propose support to the local profession and create short training courses dependent on the demand.

## 3 - ACROSS THE BORDER PROGRAMS

As our school is located only a few kilometers away from the German border, Les Sillons de Haute Alsace is partnered with programs across the border (called INTERREG) like the project Vinbiodiv. This project aims to preserve the biodiversity in the vineyards of Piémont, Rhin Supérieur. There are 9 international participants (Germany, Switzerland and France) from the agriculture and environment preservation sectors that are associated to work towards this common goal. Together, we will test different tools to elaborate a favorable methodology to protect the biodiversity in the vineyard zone. Afterwards, the results will be shared to the public and professionals.

**REPERE** (Interreg) a program linked to INRAe for planting mouse-ear-hawkweed cover crops in the inter-rows of vineyards

### **CERTI-RHIN**

A cross border network for professional adult training with specific needs in the sectors of rural services, landscaping and viticulture. Thanks to collaborative work with French-German educational professionals, existent training modules were modified in order to harmonize the training and evaluation process between the two countries.

Our team is committed to the vision of the department of agricultural: allowing all students to benefit from cross border opportunities and develop international professional projects in the sectors that our school has to offer.

### **AGROFORM** (Interreg)

« AgroForm – Agroecology in Rhin Superior innovative practices and training » aims to identify and develop innovative and alternative practices for green economy agriculture in France and Germany. In the context of agroecology, the aim is to reduce the use of pesticides and develop soil maintenance practices that have low impact on the quality of soil, air and water.

## NUMEROUS PROJECTS TO TRAIN PROFESSIONALS AND FUTURE PROFESSIONALS

We are constantly looking for partnerships to make sure our students grow into the standards of professionals and match the local needs and the expectations of citizens. How do we work with nature? What do forests, fields, meadows, animals and people expect from human activities?

While respecting everybody's choices, our team aims to train all the professionals in our sectors and to keep experimenting innovative techniques. Here are some of the topics:

Actions about: Fertility and soil maintenance, agronomic quality, sustainable water use, agricultural biostimulants, biodiversity, resistant varieties, agroforestry, sustainable breeding, better knowledge of meteorology, sustainable economy, valorization of local resources...

Changes in our habits: Reduction of pesticides and polluting chemicals use and of our effect on climate change.



**Rouffach high school**  
**CFAA**  
**CFPPA**  
8 aux Remparts  
F - 68250 ROUFFACH  
+33 3 89 78 73 00

**Pflixbourg high school**  
**CFAA**  
2, lieu-dit Saint Gilles  
F - 68920 WINTZENHEIM  
+33 3 89 27 06 40

[epl.rouffach-wintzenheim@educagri.fr](mailto:epl.rouffach-wintzenheim@educagri.fr)  
[www.epl68.fr](http://www.epl68.fr)

